

PROFESSIONAL • PROMPT • SERVICING



*Safe,  
Efficient,  
and Durable*



Disclaimer:  
All product, specifications, and data are subject to change without  
notice to improve reliability, function, or design or otherwise

# ELECTRIC CHAIN HOIST *D-series*

FITOP - 20160201

### Aluminum-alloy shell

- The aluminum alloy shell makes the hoist to be light and elegant
- Protects the key parts inside which greatly improves its capability of corrosion resistance and heat dissipation

### An integrally-formed machine box

- Superior rigidity makes it dust- and water-proof
- It can be operated always under severe environments
- A molding of the shell is compact and simpler in structure

### High-strength load chain

- Imported Japanese FEC 80 ultra-treated alloy steel chain
- It greatly enhances in the performance of fatigue- and wear-resistance
- Scratch resistance and all carburized makes it hard in surface, solid in structure

### High safety and reliability

- The hoist is equipped with limit switch which avoids over-loading and harmful consequences
- Hook latch prevents workplace injury due to slip
- The motor is equipped with thermal-protection device. When the motor temperature is high because of frequent operation, the device will automatically cut off its motor circuit in order to protect it from burning out
- Friction clutch protects the motor. The motor idles if the hoist carries over-weighted materials

### Strong braking force

- Mode brake makes the gap in clutch smaller, saves the electricity!
- The machine is equipped with two-staged gear for transmission and has helical gear for high speed transmission, which make it operation stable and noise low, 65dB
- Well-known-branded magnetic contractor

### Emergency stop prevents danger

- Emergency stop can cut off the motor circuit immediately
- Control voltage: 24V

### Highly advanced plug

- Greatly enhances the appearance of the product and the level of water-resistance
- Reduces the possibility of electricity leakage
- Inverter enables smoother starting, stopping, and moderates the speed as required (optional)



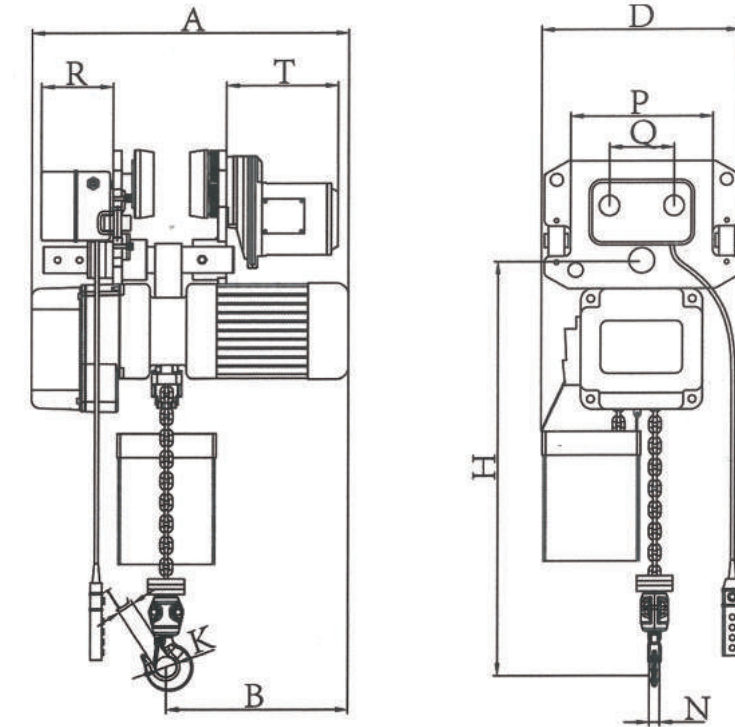
# Product Features



# DTE+1ET

Single Chain  
with electric trolley

- Standard height of lift is three metres
- Optional height of lift is available on request
- Extending the load chain with additional links is prohibited
- Essential spare parts are available



## – Technical Parameters

Type	DTE0E1	DTE011	DTE022	DTE031	DTE052
Standard Lifting Height (M)	3				
Lifting Speed (m/min)	7.2	5.8	2.5	6.0	3.0
Power (Kw)	0.9	1.1	1.1	3.0	3.0
Voltage (V)	220—440				
Frequency (Hz)	50				
Chain Turns	1	1	2	1	2
Chain Specification	φ 6.3×19	φ 8×24	φ 8×24	φ 11.2×34	φ 11.2×34
Test Load (T)	0.625	1.25	2.5	3.75	6.25

## – Specification

	(Ton)	Unit (mm)										
		H	A	B	D	K	L	N	R	T	P	Q
DTE0E1	0.5	390	595	320	300	φ 4	31	24	142	231	206	111
DTE011	1	400	595	320	300	φ 4	31	24	142	231	206	111
DTE022	2	580	595	320	300	φ 4	35	30	142	231	237	127
DTE031	3	620	785	395	520	φ 5	42	35	142	231	265	140
DTE052	5	860	785	395	580	φ 6	45	43	142	231	296	156

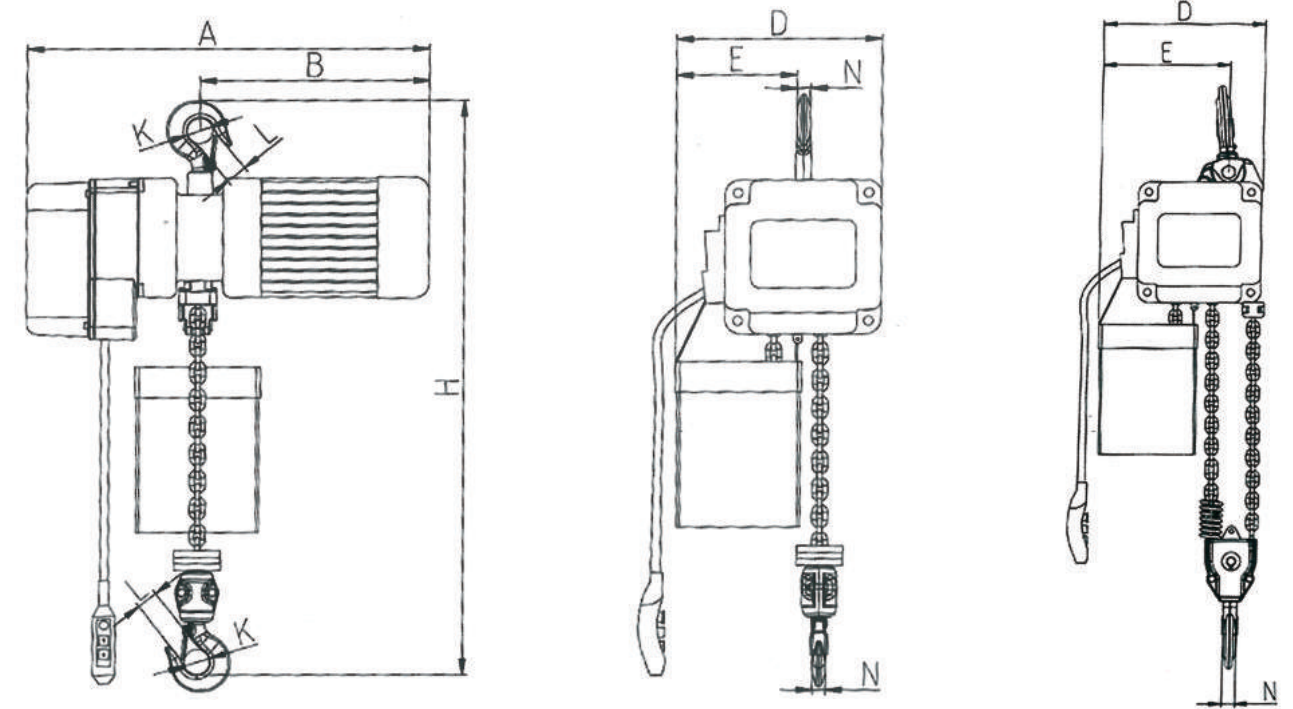




# DTS

## Single Speed

- Standard height of lift is three metres
- Optional height of lift is available on request
- Extending the load chain with additional links is prohibited
- Essential spare parts are available



### – Technical Parameters

Type	DTS0E1	DTS011	DTS022	DTS031	DTS052
Standard Lifting Height (M)	3				
Lifting Speed (m/min)	7.2	5.8	2.5	6.0	3.0
Power (Kw)	0.9	1.1	1.1	3.0	3.0
Voltage (V)	220—440				
Frequency (Hz)	50				
Chain Turns	1	1	2	1	2
Chain Specification	φ 6.3×19	φ 8×24	φ 8×24	φ 11.2×34	φ 11.2×34
Test Load (T)	0.625	1.25	2.5	3.75	6.25

### – Specification

	(Ton)	Unit (mm)							
		H	A	B	D	E	K	L	N
DTS0E1	0.5	510	595	320	290	240	φ 40	31	24
DTS011	1	520	595	320	290	240	φ 40	31	24
DTS022	2	590	595	320	300	245	φ 49	35	30
DTS031	3	630	785	395	465	295	φ 59	42	35
DTS052	5	860	785	395	465	360	φ 60	45	43

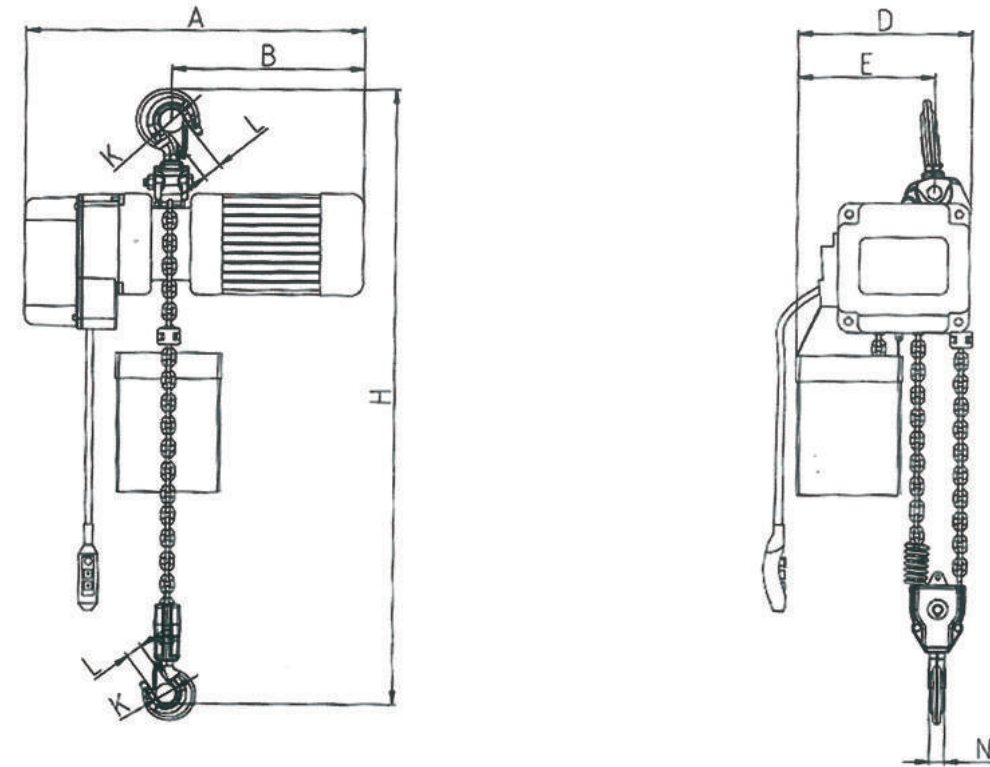


# DTS+2ET

Single Chain

Electric Chain Hoist (double chain turns)

- Standard height of lift is three metres
- Optional height of lift is available on request
- Extending the load chain with additional links is prohibited
- Essential spare parts are available



### – Technical Parameters

Type	DTS0E1	DTS011	DTS022	DTS031	DTS052
Standard Lifting Height (M)	3				
Lifting Speed (m/min)	7.2	5.8	2.5	6.0	3.0
Power (Kw)	0.9	1.1	1.1	3.0	3.0
Voltage (V)	220—440				
Frequency (Hz)	50				
Chain Turns	1	1	2	1	2
Chain Specification	φ 6.3×19	φ 8×24	φ 8×24	φ 11.2×34	φ 11.2×34
Test Load (T)	0.625	1.25	2.5	3.75	6.25

### – Specification

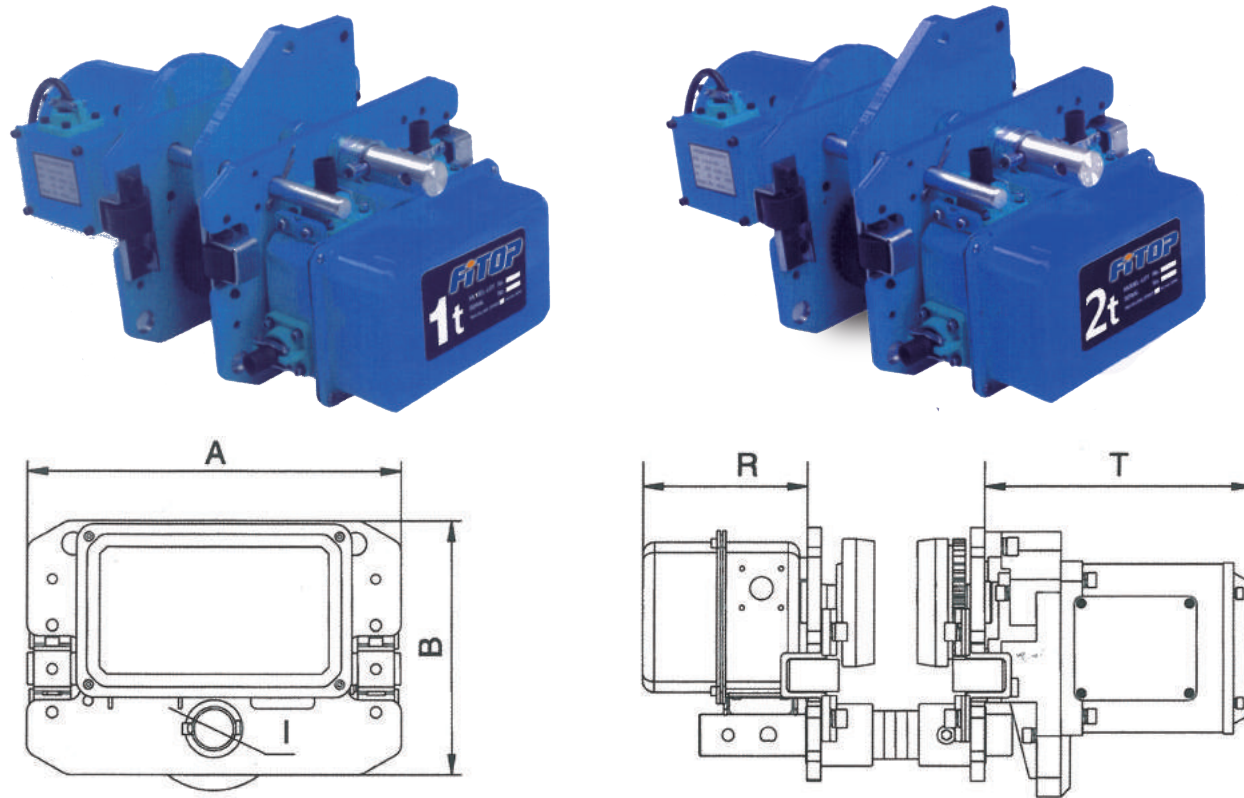
	(Ton)	Unit (mm)							
		H	A	B	D	E	K	L	N
DTS0E1	0.5	510	595	320	290	240	φ 40	31	24
DTS011	1	520	595	320	290	240	φ 40	31	24
DTS022	2	590	595	320	300	245	φ 49	35	30
DTS031	3	630	785	395	465	295	φ 59	42	35
DTS052	5	860	785	395	465	360	φ 60	45	43



# 1ET Electric Trolley

**Product features :**

- Mono-rail electric trolley is driven by the electric motor, moving on the flanged beam. It can be installed on mono-rail or cantilever crane and combined with electric hoist of other lifting tools to be electric trolley. It is widely used in warehouses, manufacturing and construction sites, etc.



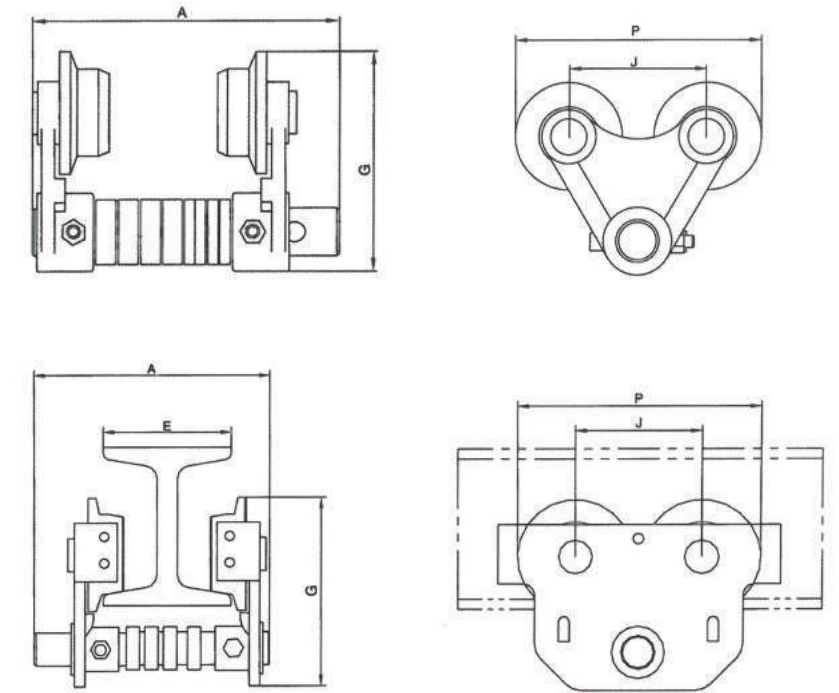
**– Specification**

	Capacity	Unit (mm)					Trolley Speed m/min	Motor (Kw)	Minimum Turning Radius (M)	I-Beam (mm)
	(Ton)	A	B	R	T	I				
1ET01	1	315	212	142	231	φ 3	11 or 21	0.4	0.8	52-153
1ET02	2	325	220	142	231	φ 3	11 or 21	0.4	0.8	82-178
1ET03	3	340	250	142	231	φ 4	11 or 21	0.75	1.0	100-178
1ET05	5	400	291	142	231	φ 5	11 or 21	0.75	1.8	100-178

# 2ET Manual Trolley

**Product features :**

- Mono-rail manual trolley is operated by hands, moving on the flanged beam freely. The size of the wheel-gap can be adjusted according to the flanged beam-width. It can be combined with the manual hoist to be manual trolley. Mono-rail manual trolley is widely used in warehouses, manufacturing and construction sites, etc.



**– Specification**

	Capacity	Unit (mm)					Minimum Turning Radius (M)
	(Ton)	A	B	R	T	I	
2ET0E	0.5	315	212	142	231	φ 31	11/12
2ET01	1	315	212	142	231	φ 31	11/12
2ET02	2	325	220	142	231	φ 36	11/12
2ET03	3	340	250	142	231	φ 43	11/12
2ET05	5	400	291	142	231	φ 54	11/12